

STARLINE EQUALIZERS • Models SE-^{*}-A, 1500 and 1750 Series

DESCRIPTION

These equalizers are available on special order and are shipped separately as accessories to Starline Amplifier Models SA-1A, SA-2A, SA-3A, SA-4A and SA-6A.

The following equalizer models are available:

Model SE-17-A	Compensates for 17 dB of air-dielectric type of cable.
Model SE-17-1500	Compensates for 17 dB of JT-1500 type of cable.
Model SE-17-1750	Compensates for 17 dB of JT-1750 type of cable.
Models SE-12 Series	The same types of cable as above, but for 12 dB.
Models SE-8 Series	The same types of cables as above, but for 8 dB.

All equalizers are factory-aligned to compensate for tilt in cable of standard characteristics. Where installed cable is found to deviate from nominal tilt, R4 and C1 on the equalizer permit field adjustment to compensate for such deviations; R1 controls the low-frequency end, C1 controls the mid-frequency portion of the response.

The equalizer networks are mounted on printed circuit boards. They are installed in SA-models simply by removing the two screws holding the shorting (0 dB) link on the plug-in pad circuit board, discarding the link, removing the third screw on the same board, and then using all three screws for securely fastening the equalizer board in sandwich fashion on top of the plug-in pad board. Interconnection of circuitry is effected through the mounting screws and their associated stand-offs.

SPECIFICATIONS

	SE-17- [*]	SE- [*] -12	SE- [*] -8
FREQ. RANGE	54 MHz to 216 MHz		
EQUALIZATION at 216 MHz, 70°F	17 dB ±0.25 dB	12 dB ±0.25 dB	8 dB ±0.25 dB
INSERTION LOSS	1 dB nom., 1.25 dB max.		
IMPEDANCE	75 ohms		
MIN. RETURN LOSS			
SE- [*] -A	20 dB	16 dB	20 dB
SE- [*] -1500	20 dB	20 dB	20 dB
SE- [*] -1750	18 dB	18 dB	20 dB

Fig. 1
Model SEA
ADAPTER
BOARD

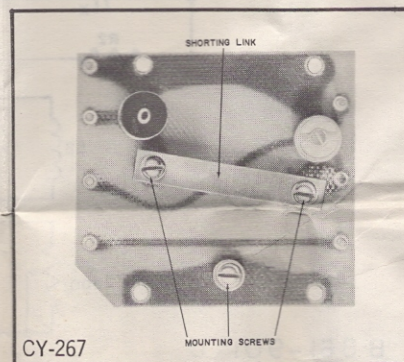


Fig. 2
Model SE-17-1500
EQUALIZER
BOARD

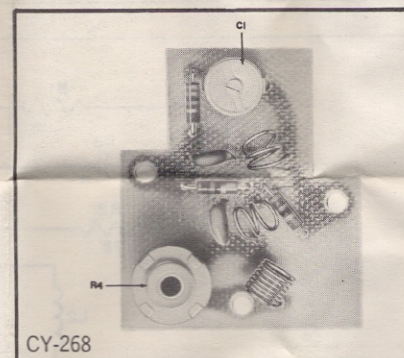
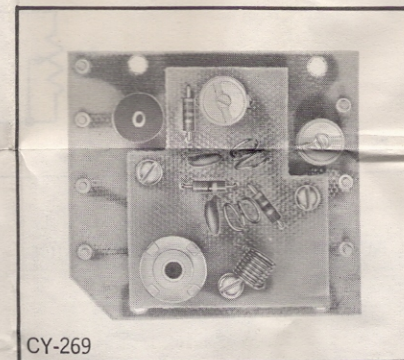
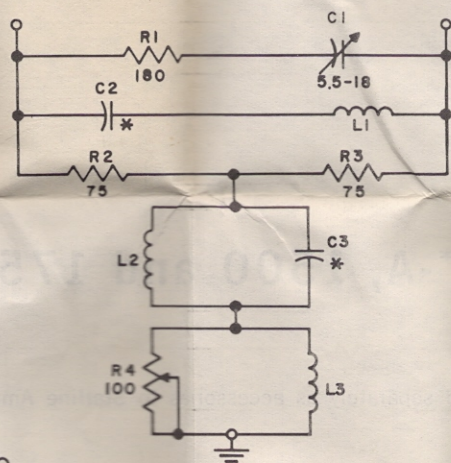


Fig. 3
SE-17-1500
MOUNTED
ON SEA



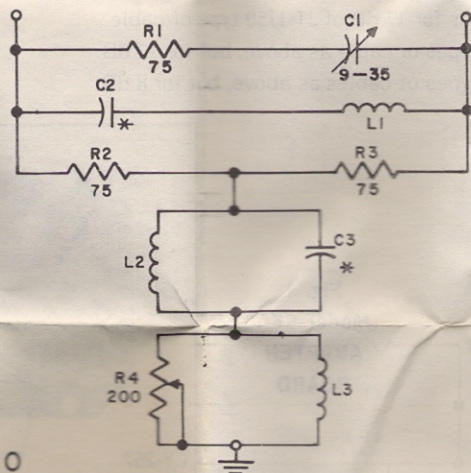


SCHEMATIC
STARLINE CABLE EQUALIZER
MODEL SE-17 SERIES

MODEL	C 2	C 3
SE-17-A	10	13
SE-17-1500	10	13
SE-17-1750	8.2	15

NOTES:
1. UNLESS OTHERWISE SPECIFIED.
A. ALL FIXED RESISTORS ARE
5% 1/4 WATT.
B. ALL CAPACITORS ARE IN pF
2. * SEE TABLE FOR VALUE

B 861-878-0

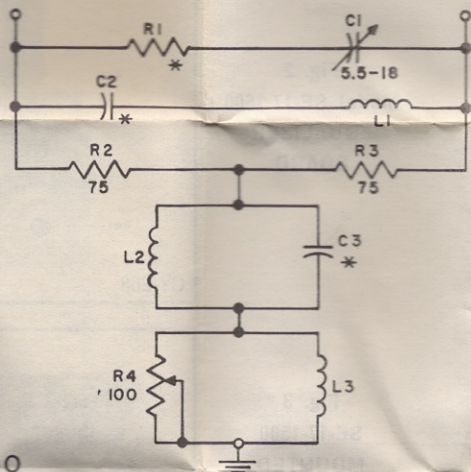


SCHEMATIC
STARLINE CABLE EQUALIZER
MODEL SE-8 SERIES

MODEL	C 2	C 3
SE-8-A	18	4.3
SE-8-1500	18	4.3
SE-8-1750	15	4.7

NOTES:
1. UNLESS OTHERWISE SPECIFIED
A. ALL FIXED RESISTORS ARE
5% 1/4 WATT.
B. ALL CAPACITORS ARE IN pF
2. * SEE TABLE FOR VALUE

B 861-901-0



SCHEMATIC
STARLINE CABLE EQUALIZER
MODEL SE-12 SERIES

MODEL	C 2	C 3	R 1
SE-12A	10	3.9	130
SE-12-1500	10	3.9	130
SE-12-1750	9.1	4.3	180

NOTES:
1. UNLESS OTHERWISE SPECIFIED
A. ALL FIXED RESISTORS ARE
5% 1/4 WATT.
B. ALL CAPACITORS ARE IN pF
2. * SEE TABLE FOR VALUE

B 861-902-0

ALL DATA SUBJECT TO CHANGE WITHOUT NOTICE.

JERROLD ELECTRONICS CORPORATION
CATV SYSTEMS DIVISION
Philadelphia, Pa. 19105