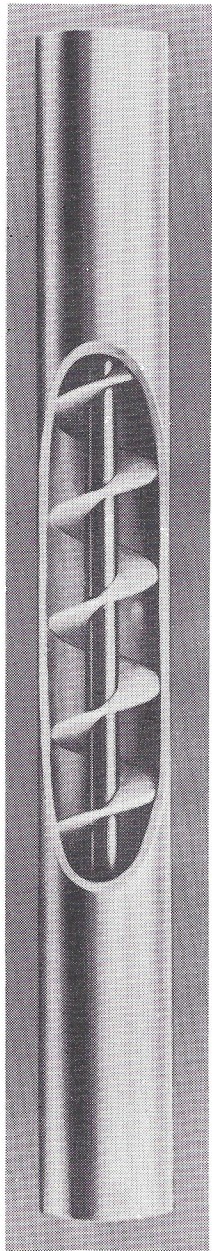






# The Helical Membrane

## ampli-vision - Telcon Coaxial Cable



"INTERNAL STRUCTURE  
OF HELICAL  
MEMBRANE"

**ampli-vision** introduces the first complete line of AV series low loss coaxial cables and fittings.

**F**OR YEARS engineers have sought to design the perfect cables for RF use. Such cables demanded characteristics which include: low attenuation... uniform frequency response... minimum VSWR... minimum effect on electrical characteristics due to temperature change... ability to transfer low level signals without interference from external sources... capacity to transmit high level signals without radiation or over-heating... construction of rugged quality, but with utmost flexibility permitting ease of installation... perfectly matched coaxial fittings and terminations. And, most important, prices **MUST BE LOW!**

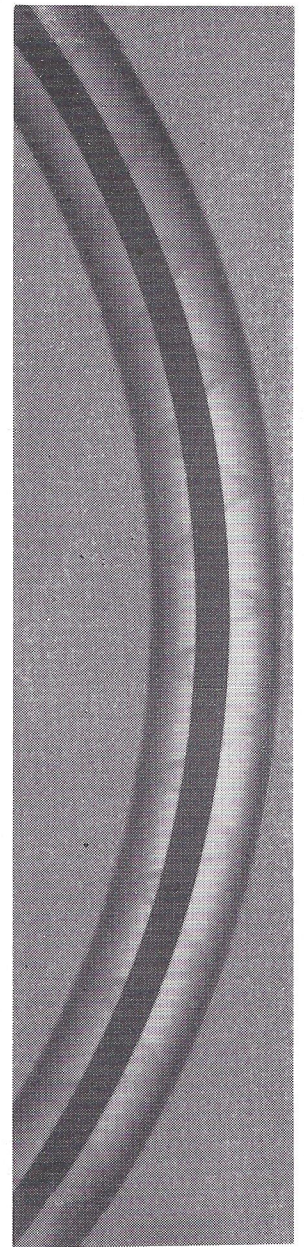
**ampli-vision** proudly announces achievement of these vital properties in its **HELICAL MEMBRANE ALUMINUM COAXIAL CABLE**. This cable, manufactured by patented processes, is available with either a bare aluminum sheath (AV4 or AV6) or a PVC protective sheath extruded over the aluminum (AV4P or AV6P). Among its outstanding features are:

**LOW ATTENUATION:**—Due to high percentage of air used as dielectric in its manufacture there is low loss and less variation with temperature change.

**MINIMUM VSWR:**—AV Cables and fittings have precision uniformity maintained by the closest possible manufacturing tolerances.

**MAXIMUM FLEXIBILITY:**—Unique mechanical design of helical membrane maintains perfect centering at maximum bending radii.

**GREATEST VERSATILITY:**—Optimum performance from Video to UHF; receiving and transmitting powers ranging from milliwatts to kilowatts.



"X-RAY VIEW SHOWING  
PERFECT CENTERING  
WHEN BENT"

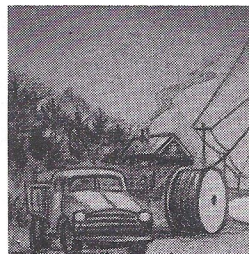
## ampli-vision

PRODUCTS OF  
**INTERNATIONAL TELEMETER CORPORATION**

2000 Stoner Avenue, Los Angeles 25, California

A SUBSIDIARY OF

**PARAMOUNT PICTURES CORPORATION**



COMMUNITY ANTENNA S



# Membrane Story!

ables • • • the most versatile in the communication field!

## Outstanding features of AV CABLES

### PROPERTIES

- Low attenuation
- Uniform electrical characteristics over a wide frequency range
- Uniform electrical characteristics over long lengths
- Unchanging electrical characteristics as cable ages
- No radiation
- Excellent shielding—no interference from external sources
- Extremely low VSWR
- Effect of temperature upon electrical properties is reduced to a minimum
- High mechanical strength
- Flexibility without distortion
- Light weight
- Long life
- Complete range of connectors available
- Patented manufacturing processes combine high quality with reasonable cost

### USES

- Community Antenna Television Systems  
Transmission Lines  
Primary Distribution
- Industrial Television Systems  
Video Signals can be transmitted greater distances without trouble  
R. F. Signals can be transmitted hundreds of miles with the minimum of amplification
- Communications (microwave and scatter)  
Coaxial feed between antenna and transmitters or receivers  
Special AV cables available for replacement of waveguide at UHF
- Television and Radio Broadcasting  
VHF, UHF, AM, FM  
Antenna Leads, Remote TV Pick-up

## ampli-vision - Telcon FITTINGS FOR AV CABLE

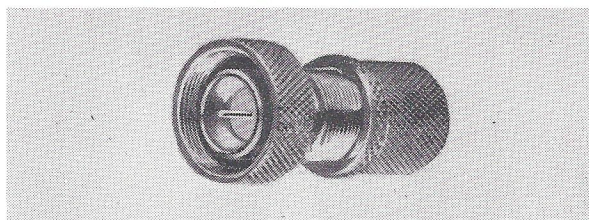
Connectors for the new AV CABLES are extremely well made and match the impedance of the cable. The following types are available:

**AVP:** Plug connectors used with small flexible cables—for mating AV cables with RG series.

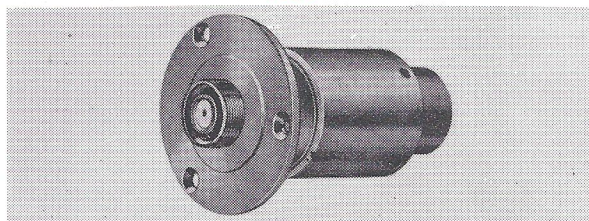
**AVS:** Socket terminations. These connectors are provided with a flange so that they may be bolted into a panel or, when used externally, bolted onto a pole box.

**AVJ:** Straight through connectors that give a permanent joint without plug and socket facilities.

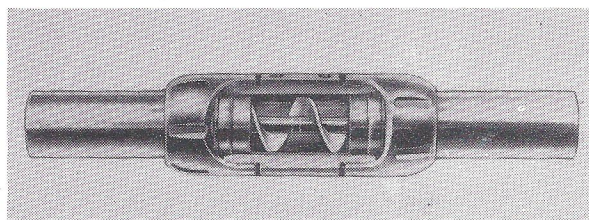
(NOTE: Not shown is the AVT connector for cable termination, a flange mounted, ceramic termination that can be provided with gas flushing facilities, etc.)



AVP



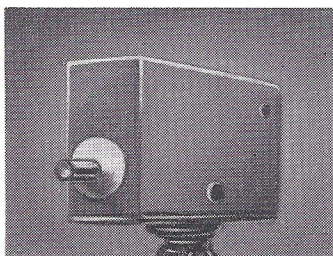
AVS



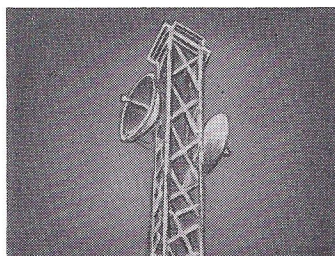
AVJ



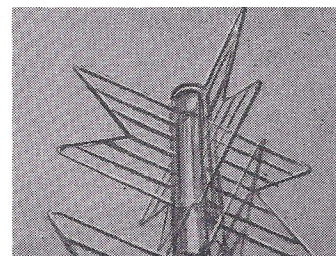
SYSTEMS



INDUSTRIAL TV CIRCUITS



COMMUNICATION FEEDS



VHF AND UHF TV ANTENNAS



# SPECIFICATIONS

	AV4†	AV6†
* Nominal Characteristic Impedance ohms	75	75
▲ Approximate Overall size ins.	¾"	½"
<b>ELECTRICAL DATA</b>		
Characteristic Impedance ohms	73-77	73-77
Capacitance uuF/ft	14.3	14.3
Attenuation (db/100 ft)		
1 Mc/s	0.048	0.073
10 Mc/s	0.155	0.24
100 Mc/s	0.52	0.77
1000 Mc/s	1.8	2.7
3000 Mc/s	3.6	5.0
▲ Power rating in air (kW) for 35°C ambient temperature		
1 Mc/s	21	12
10 Mc/s	6.7	3.7
100 Mc/s	2.0	1.1
1000 Mc/s	0.57	0.33
3000 Mc/s	0.28	0.18
Maximum R. F. Voltage kV. (Peak)	2.2	1.3
<b>MECHANICAL DATA</b>		
Diameter in inches:		
Over Copper Conductor	0.170	0.111
Under Aluminum Sheath	0.631	0.401
Over Aluminum Sheath	0.735	0.475
Over P.V.C. Sheath	0.855	0.555
Minimum Bending Radius for Installations (ins.)	11 ins.	7 ins.
Weight lbs. 1000 ft. :		
Aluminum sheathed cable only	233	96
P.V.C. Sheathed finish	320	140
Tensile Strength (Conductor) lbs.	760	325
<b>CONNECTORS FOR A-V CABLES</b>		
Joints	AVJ4	AVJ6
Terminations	AVT4	AVT6
Socket Terminations	AVS4	AVS6

\* 50 ohm cable available on request

▲ High power low loss cables up to 3¼" dia. available

† If PVC protective sheathing is required, specify AV4P or AV6P

## OTHER AMPLI-VISION PRODUCTS FOR COMMUNITY AND INDUSTRIAL TELEVISION

IN ADDITION to AMPLI-VISION Helical Membrane Coaxial Cable, the AMPLI-VISION division of INTERNATIONAL TELEMETER CORPORATION manufactures a wide array of equipment for use in community television systems, industrial TV installations, master TV systems for hotel, motel and multiple-dwellings. These products include: Broadband Amplifiers . . . Power Supplies . . . Channel Amplifiers . . . Line Splitters . . . Attenuators . . . Equalizers . . . Bridging Terminals . . . Circuit Breakers . . . Isolation Units . . . and other electronic devices.



# ampli-vision

PRODUCTS OF  
**INTERNATIONAL TELEMETER CORPORATION**  
 2000 Stoner Avenue, Los Angeles 25, California  
 A SUBSIDIARY OF  
**PARAMOUNT PICTURES CORPORATION**